

aune

aune

M1s

32bit/DSD Balanced Portable
Music Player

Hi-Fi Music System, designed For Music

Format TF Card FAT32

Check Format Instructions At [aune Website](http://aune.com)

aune | 430034 WUHAN | CHINA

Tel: +86-27-59251012 | Fax: +86-27-85840435
www.auneaudio.com

使用手册/Manual

Preface

Dear Customers,

Thank you very much for purchasing aune M1s portable music player. We sincerely hope the brand new M1s will bring you great Hi-Fi experiences and lots of fun!

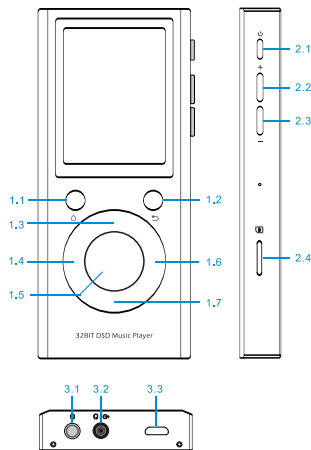
Please read this manual carefully to ensure you know how to properly operate this device before use.

Tel: +86-27-59251012

Fax: +86-27-85840435

www.auneaudio.com

View Of Panel And Name Of Each Part



- | | |
|-------------------|-------------------------------|
| 1.1 Home button | 2.1 Power button/ Lock button |
| 1.2 Back button | 2.2 Volume + |
| 1.3 Up | 2.3 Volume - |
| 1.4 Left button | 2.4 TF card slot |
| 1.5 Middle button | 3.1 Balanced port |
| 1.6 Right button | 3.2 Headphone port |
| 1.7 Down | 3.3 Charging port |

Tips:

- 1. Connect with the computer through USB line, can delete and duplicate files.

Introduction

M1s is the latest generation product of the popular aune M1, it adopts simple and small shape design, using asynchronous clock technology and the latest Cortex-M7 pure hardware solution framework. It is the first time to use the synchronization ES9018K2M, it is a high-end mini Hi-Fi player with balanced output.

Buttons Operating Instructions

N0.	Button	Browsing Mode	Playing Mode
1.1	Home Button	a. After starting up, press → main menu ; b. When the screen is locked, press → unlock & go to Playing screen	
1.2	Back Button	Back to previous option	
1.3	Up	Previous option	Switch cycle mode, long press → add to add to Favorites/ delete from Favorites
1.4	Left button	Choose previous page	Previous song ; Long press → rewind
1.5	Middle button	OK	play/pause
1.6	Right button	Choose next page	Next song; Long press → fast forward
1.7	Down	Choose next option	Stop ; Long press → Switch filter mode
2.1	Power button	Long press → power on/off ; After starting up, press one → Lock ; When locked, press one → back to playing screen	
2.2	Volume+	Volume become bigger	
2.3	Volume-	Volume decreased	

Specifications

Output:

Headphone Impedance : 8-600R

Headphone AMP THD+n : 0.00027%

Headphone AMP output power : 110mw@32Ω BAL output -
180mw@32Ω

DNR : 120DB

CCIF : 19KHZ+20KHZ 0.00012% @32R

Noise : 2.52 uVrms

Max Level : 1.92Vrms

Supported formats:

WAV : 16bit|24bit|32bit - 44.1K/48K/88.2K/96K/176.4K/192K/
352.8K/384K WAV+CUE

FLAC : 16bit|24bit - 44.1K/48K/88.2K/96K/176.4K/192K

DSD : DSF/DFF/ISO

APE : 16bit/44.1K normal

MP3/ALAC/AAC/AIFF/AIF

Battery:

More than 10 hours of continuous playback (16bit/44.1K
files/continuous playback)

Biggest battery charging currents is 1.3A, it is recommended to
use adaptor more than 1.5A, in order to achieve the fastest
charging effect

Ports:

3.5mm headphone port, 2.5mm balanced headphone port

Languages:

Chinese(Simplified/Traditional)/English/Japanese /Korean

Display screen: 2.4 inches IPS

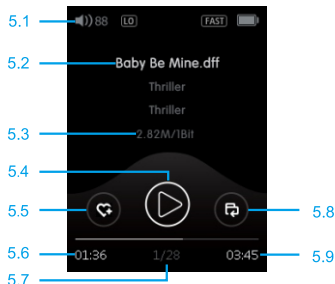
Transmission medium: TF card (supports up to 128G, FAT32)

Dimensions: 55 x 126 x 14.8 (mm)

Weight: 147g

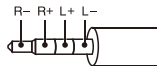
Accessories: M1s *1 / USB cable*1 / User's manual*1

Playing Screen Display Instructions

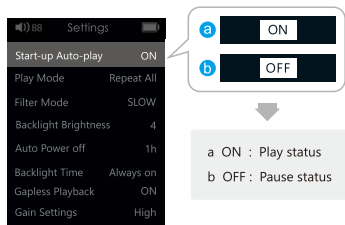


- 5.1 Status bar displays:
Volume, Line out mode, filter mode, battery
Line out mode: LO
Filter mode: FAST, SLOW, MP
- 5.2 Song title, artist, album
- 5.3 Sampling rate
- 5.4 Play status: play/pause/stop/fast forward/rewind
- 5.5 Status of favorites
- 5.6 Elapsed time
- 5.7 No./total number of all songs
- 5.8 Play mode: Repeat all/shuffle/repeat one
- 5.9 Length of the song

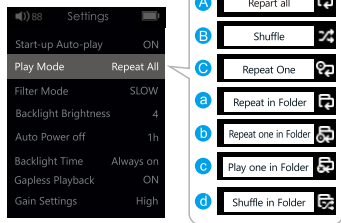
Balanced audio pin map



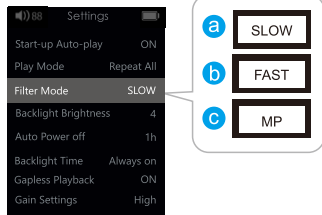
Setting Screen Operation Instructions



Start-up Auto-play

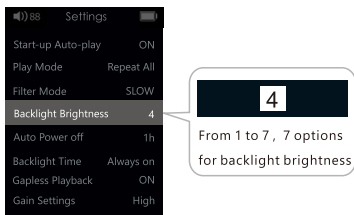


Play Mode

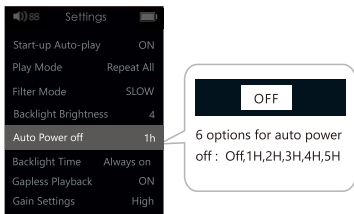


Filter Mode

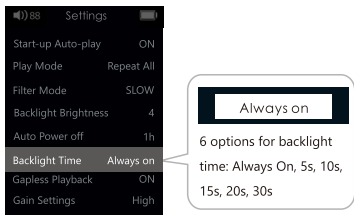
Setting Screen Operation Instructions



Backlight Brightness

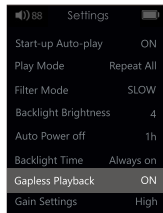


Auto Power off



Backlight Time

Setting Screen Operation Instructions



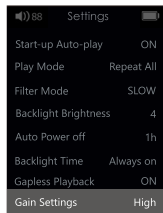
When playing CUE in a folder and the Gapless Playback is On, after one song ends, the next song will be automatically played immediately. There will be no pause.



ON

OFF

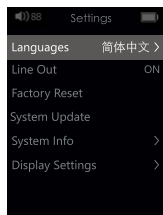
Gapless Playback



High

Three Settings:
High,Medium,Low

Gain settings

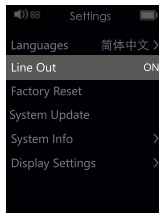


Languages

- Simplified Chinese**
- Traditional Chinese
- English
- Japanese
- 한국어

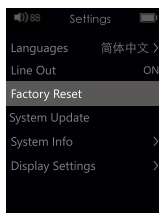
Languages

Setting Screen Operation Instructions



Connect with external headphone amplifier through "Line out" , please do not insert the earphone when Line out is "ON" .

Line Out



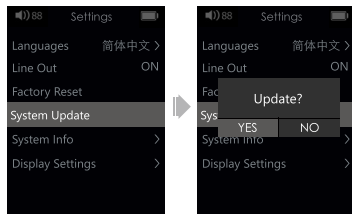
Factory Reset: Delete all user settings, recently played and songs in Favorites



If you are sure to reset, select YES, and there will be a progress bar. Wait until it finishes.

Factory Reset

Setting Screen Operation Instructions



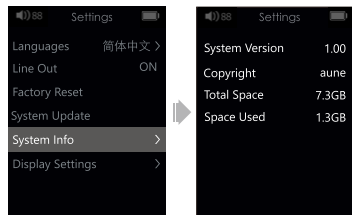
System Update

Update

After restart, the system will automatically find the update file. Select "YES" and the upgrade will begin.

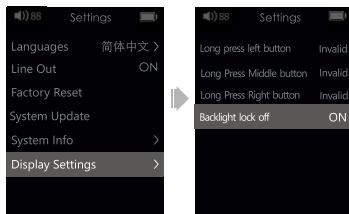


After the update if the screen displays "failed to mount", it means it failed to update the songs and files. All you need to do is insert the TF card again.

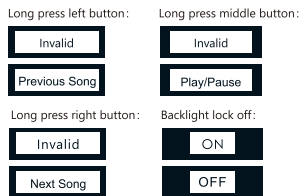


System Info

Setting Screen Operation Instructions



Display Settings



Operation

Instructions

Connect to portable devices
or devices with LINE IN

1.Connect with headphones through M1s's 2.5mm balanced port and 3.5mm headphones port (as **a** shown in the picture)

2.Connect the M1s to the devices with LINE IN through M1s's 3.5mm headphones port and recording line (as **b** shown in the picture)

